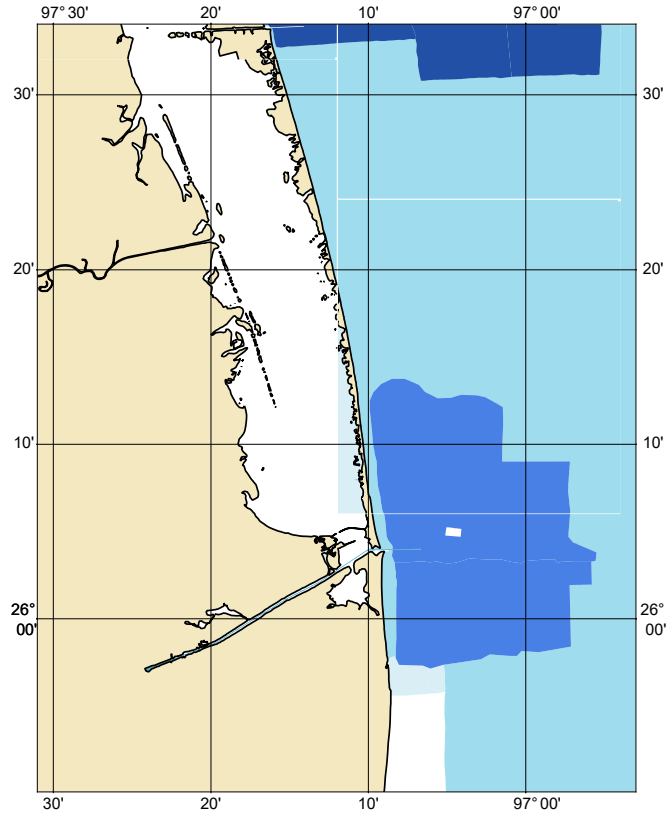






Zone of Confidence (ZOC) Diagram



ZOC CATEGORIES

ZOC	COLOR	POSITION ACCURACY	DEPTH ACCURACY	SEAFLOOR COVERAGE
A1		± 5 m + 5% depth ± 16.4 ft + 5% depth	= 0.50 m +1% d = 1.6 ft +1% d = 0.3 fm +1% d	All significant seafloor features detected.
A2		± 20 m ± 65.6 ft	= 1.00 m +2% d = 3.3 ft +2% d = 0.6 fm +2% d	All significant seafloor features detected.
B		± 50 m ± 164.0 ft	= 1.00 m +2% d = 3.3 ft +2% d = 0.6 fm +2% d	Uncharted features hazardous to surface navigation are not expected but may exist.
C		± 500 m ± 1640.4 ft	= 2.00 m +2% d = 6.6 ft +2% d = 1.1 fm +2% d	Depth anomalies may be expected.
D		Worse than ZOC C	Worse than ZOC C	Large depth anomalies may be expected.
U		Unassessed - The quality of the bathymetric data has yet to be assessed.		

113010G

NOAA CUSTOM CHART
NOTES GEOSPATIAL DATABASE
VERSION 2.0B - 29 MARCH 2024

CAUTION
AUTOMATED CHART GENERATION

The records of the NOAA Custom Chart Notes Geospatial Database are current as of May 1st, 2023. Subsequent additions and refinements are to be expected. Please refer to all available navigational publications for complete information about the charted area.

CAUTION CHART UPDATES

This NOAA Custom Chart contains up-to-date information only as of the time of creation, and will become outdated. Mariners are advised to visit https://distribution.charts.noaa.gov/weekly_updates/ to check for weekly updates, and to render a new NOAA Custom Chart when information is updated. Notices to Mariners are not issued for corrections to this NOAA Custom Chart.

AUTHORITIES

Hydrography and topography by the National Ocean Service, Coast Survey, with additional data from the Corps of Engineers, Geological Survey, U.S. Coast Guard and National Geospatial-Intelligence Agency.

COMMENTS REQUESTED

NOAA encourages users to submit inquiries, discrepancies, or comments about this chart via NOAA's ASSIST tool at <https://nauticalcharts.noaa.gov/customer-service/assist/>.

This NOAA Custom Chart has been automatically rendered from NOAA Electronic Navigational Chart (NOAA ENC®) data. Mariners using this NOAA Custom Chart are advised that this is a static reproduction of the NOAA ENC®. This NOAA Custom Chart has not been individually quality checked or adjusted for optimal use for navigation. The portrayal may be at a different scale from that of the original NOAA ENC®. Mariners are advised to use caution when using this NOAA Custom Chart for navigation and are encouraged to use the latest NOAA ENC® to access the most up-to-date information. Mariners must also comply with all applicable regulatory requirements.

HEIGHTS

Heights of fixed aids to navigation and vertical clearances of overhead obstructions will be shown in feet if the units are set to feet or fathoms. If units are set to meters, heights will be shown in meters. Land elevation values are shown in meters only.

WATER LEVELS, CURRENTS, AND TIDES

Real-time water levels, tide predictions, and tidal current predictions are available on the internet from NOAA's Center for Operational Oceanographic Products and Services (CO-OPS) at https://tidesandcurrents.noaa.gov/water_level_info.html and https://tidesandcurrents.noaa.gov/currents_info.html.

ABBREVIATIONS

For complete list of Symbols and Abbreviations, see Chart No. 1.

113010G

POLLUTION REPORTS

Report all spills of oil and hazardous substances to the National Response Center via 1-800-424-8802 (toll free), or to the nearest U.S. Coast Guard facility if telephone communication is impossible (33 CFR 153).

WARNING

The prudent mariner will not rely solely on any single aid to navigation, particularly on floating aids. See U.S. Coast Guard Light List and U.S. Coast Pilot for details.

SUPPLEMENTAL INFORMATION

Consult U.S. Coast Pilot 5 for important supplemental information.

Refer to charted regulation section numbers.

SOUNDING DATUM

Soundings referred to Mean Lower Low Water (MLLW).

NOTE A

Navigation regulations are published in Chapter 2, U.S. Coast Pilot 5. Additions or revisions to Chapter 2 are published in the Notices to Mariners. Information concerning the regulations may be obtained at the Office of the Commander, 8th Coast Guard District in New Orleans, LA or at the Office of the District Engineer, Corps of Engineers in Galveston, TX.

Refer to charted regulation section numbers.

AIDS TO NAVIGATION

Consult U.S. Coast Guard Light List for supplemental information concerning aids to navigation.

RADAR REFLECTORS

Radar reflectors have been placed on many floating aids to navigation. Individual radar reflector identification on these aids has been omitted from this chart.

ADDITIONAL INFORMATION

Additional information can be obtained at www.nauticalcharts.noaa.gov

SUPPLEMENTAL INFORMATION

Consult U.S. Coast Pilot 5 and NGA Publication 148 for supplemental information.

VERTICAL DATUM

Overhead clearances are referred to Mean High Water (MHW).

COLREGS DEMARCATION LINE

The Inland Navigational Rules Act of 1980 is in effect for vessels transiting this area. The seaward boundaries of this area are the COLREGS demarcation lines. In the area seaward of the COLREGS demarcation lines, vessels are governed by COLREGS: International Regulations for Preventing Collisions at Sea, 1972. The COLREGS demarcation line is defined in COLREGS 33 CFR 80.850e.

COLREGS DEMARCATION LINE

The Inland Navigational Rules Act of 1980 is in effect for vessels transiting this area. The seaward boundaries of this area are the COLREGS demarcation lines. In the area seaward of the COLREGS demarcation lines, vessels are governed by COLREGS: International Regulations for Preventing Collisions at Sea, 1972. The COLREGS demarcation line is defined in COLREGS 33 CFR 80.850f.

MINERAL DEVELOPMENT STRUCTURES

Obstruction lights and sound (fog) signals are required for fixed mineral development structures, subject to approval by the District Commander, U.S. Coast Guard (33 CFR 67).

INTRACOASTAL WATERWAY AIDS

The U.S. Aids to Navigation System is designed for use with nautical charts, and the exact meaning of an aid to navigation may not be clear unless the appropriate chart is consulted. Aids to navigation marking the Intracoastal Waterway exhibit unique yellow symbols to distinguish them from aids marking other waterways. When following the Intracoastal Waterway westward from Carrabelle, FL to Brownsville, TX, aids with yellow triangles should be kept on the starboard side of the vessel and aids with yellow squares should be kept on the port side of the vessel. A horizontal yellow band provides no lateral information, but simply identifies aids to navigation as marking the Intracoastal Waterway.

COPYRIGHT

No copyright is claimed by the United States Government under Title 17 U.S.C. However, other nations may claim intellectual property rights on the compilation of data depicting the foreign waters shown on this chart.

HURRICANES AND TROPICAL STORMS

Hurricanes, tropical storms and other major storms may cause considerable damage to marine structures, aids to navigation and moored vessels, resulting in submerged debris in unknown locations. Charted soundings, channel depths and shoreline may not reflect actual conditions following these storms. Fixed aids to navigation may have been damaged or destroyed. Buoys may have been moved from their charted positions, damaged, sunk, extinguished or otherwise made inoperative. Mariners should not rely upon the position or operation of an aid to navigation. Wrecks and submerged obstructions may have been displaced from charted locations. Pipelines may have become uncovered or moved. Mariners are urged to exercise extreme caution and are requested to report aids to navigation discrepancies and hazards to navigation to the nearest United States Coast Guard unit.

CAUTION

Temporary changes or defects in aids to navigation are not indicated on this chart. See Local Notice to Mariners.

During some winter months or when endangered by ice, certain aids to navigation are replaced by other types or removed. For details, see U.S. Coast Guard Light List.

113010G

CAUTION LIMITATIONS ON THE USE OF RADIO SIGNALS

Limitations on the use of radio signals as aids to marine navigation can be found in the U.S. Coast Guard Light Lists and National Geospatial-Intelligence Agency Publication 117.

Radio direction-finder bearings to commercial broadcasting stations are subject to error and should be used with caution.

UNCHARTED ROCKS

Many uncharted rocks exist in Laguna Madre.

TIDAL INFORMATION

In Laguna Madre and adjacent bays the periodic tide has a mean range of less than one-half foot, except near the Gulf Inlets. Water stages vary greatly with weather conditions.

Areas that are frequently submerged are shown by a green tint.

The broken shoreline symbol represents an approximate mean high waterline.

CAUTION

Improved channels are subject to shoaling, particularly at the edges.

CAUTION SUBMERGED CABLES AND PIPELINES

Additional uncharted submarine pipelines and submarine cables may exist within the area of this chart. Not all submarine pipelines and submarine cables are required to be buried, and those that were originally buried may have become exposed. Mariners should use extreme caution when operating vessels in depths of water comparable to their draft in areas where pipelines and cables may exist, and when anchoring, dragging or trawling.

Covered wells may be marked by lighted or unlighted buoys.

NOAA WEATHER RADIO BROADCASTS

The NOAA Weather Radio station listed below provides continuous weather broadcasts. The reception range is typically 20 to 40 nautical miles from the antenna site, but can be as much as 100 nautical miles for stations at high elevations.

Brownsville, TX WWG-34 162.55MHz